

S25 Illuminated pushbuttons



- Illuminated pushbuttons
- SUS316L stainless steel are available
- High resistance to vibration and impact
- Quickly connector and PCB connector are available
- Laser Markings are available for any symbol or text in any language
- High IP67/69K protection
- Oiltight model are available
- Single or bi-color LEDs available

• CE RoHS

Mounting Dimensions and styles

25FU=Φ25Flat+Ring
25FD=Φ25Flat+Lens
25FM=Φ25Flat+Standby

Switching Action

Blank =Momentary T=Maintained

Contact

11=1NO+1NC 10 =1NO
20 =2NO 01 =1NC
02 =2NC

Terminal

L=Solder/Tab #110 (2.8*0.5)
S= PC Board (1.2*0.7)

Voltage①

06=6VAC/DC 110=110VAC/DC
12=12VAC/DC 220=220VAV/DC
24=24VAC/DC

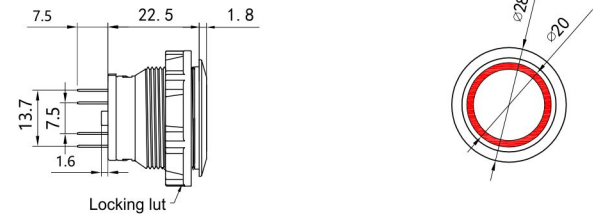
Color②

R= Red Y= Yellow
G= Green W= White
B= Blue A=Amber

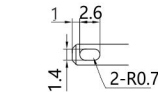
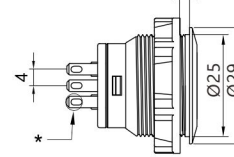
Ordering code

Shape	Switching action	Contact	Code	Terminal	Note
Flat+ Ring (Fu)	Momentary	1NO+1NC	S25FU-11□①②	In place of □ insert terminal as follows: L:Solder/Tab#110 S:PC Board	In place of ① insert voltage and② Led color from tab
		2NO	S25FU-20□①②		
		2NC	S25FU-02□①②		
	Maintained	1NO+1NC	S25FU-11T□①②		
		2NO	S25FU-20T□①②		
		2NC	S25FU-02T□①②		
Flat+ Lens (FD)	Momentary	1NO+1NC	S25FD-11□①②		
		2NO	S25FD-20□①②		
		2NC	S25FD-02□①②		
	Maintained	1NO+1NC	S25FD-11T□①②		
		2NO	S25FD-20T□①②		
		2NC	S25FD-02T□①②		
Flat+ Standby (FM)	Momentary	1NO+1NC	S25FM-11□①②		
		2NO	S25FM-20□①②		
		2NC	S25FM-02□①②		
	Maintained	1NO+1NC	S25FM-11T□①②		
		2NO	S25FM-20T□①②		
		2NC	S25FM-02T□①②		

Outline Dimensional drawingmm

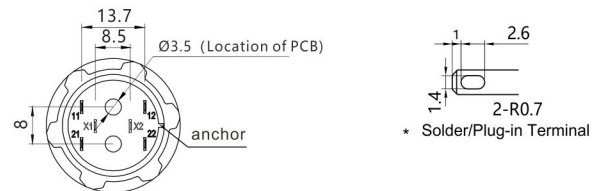


Panel thickness:1~10mm



*Solder/Plug-in Terminal

Bottom View



- Mounting Hole Layout & Mini Mounting spacing Reference P32
- Quick connection are available, The wire length of quick connection on request.

Terminal Arrangement

