

S19  
Pushbutton

- $\Phi 19\text{mm}$
- Front Bezel : Flat, Flat/Exten, Raised
- Action: Momentary; Maintained
- Terminal: Solder/Plug-in  $2.8 \times 0.5$
- Silver alloy/Gold plated silver alloy
- Contact: 1NO+1NC □ 2NO+2NC
- IP67
- IEC/EN 60947-5-1,  
IEC/EN 60073, IEC/EC 60529

## Mounting Dimensions and styles

19F=16mm +Flat  
19R=16mm +Flat/Extended  
19E=16mm + Raised

## Contact arrangement①

11=1NO+1NC      22=2NO+2NC

## Switching action②

Blank =Momentary      T=Maintained

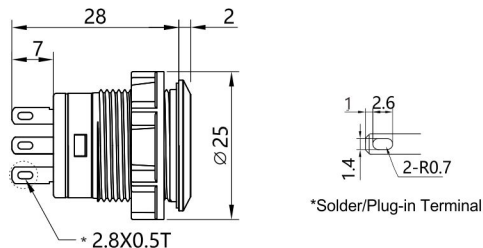
## Ordering code

Shape	Switching action	Code		Note
		1NO+1NC	2NO+2NC	
Flat (F)	Momentary	S19F-11L	S19F-22L	Reference the tables①②
	Maintained	S19F-11TL	S19F-22TL	
Flat/Extended (R)	Momentary	S19R-11L	S19R-22L	
	Maintained	S19R-11TL	S19R-22TL	
Raised (E)	Momentary	S19E-11L	S19E-22L	
	Maintained	S19E-11TL	S19E-22TL	

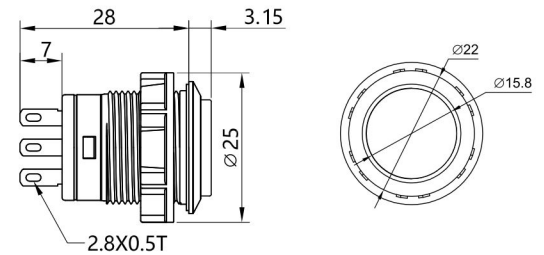
PS: Except for the listed products models, Special and Customized Products are available. please consult the factory for more details.

Outline Dimensional drawing<sub>mm</sub>

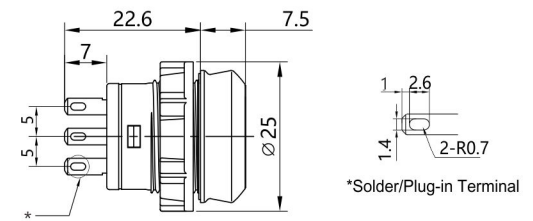
## Flat Style



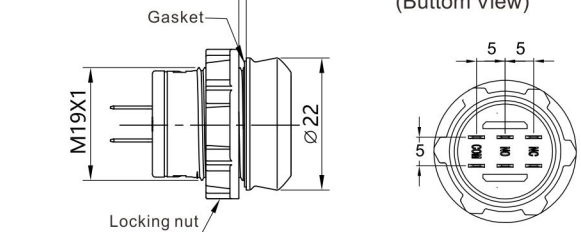
## Flat/Extended style



## Raised style

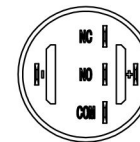


Panel Thickness: 1 ~ 8mm

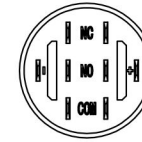


## Terminal Arrangement

1NO+1NC(11)



2NO+2NC(22)



- Mounting Hole Layout & Mini Mounting spacing Reference P32
- Quick connector and wire length is possible.